



SI-AT-22 (02) Supported consumables, parameter v86 (metric)

For a detailed list of supported items, check the operating instructions of relevant consumables.

	AT qualified versions and sizes
Text	Preferred tool
Text	Optional tool
	AT qualification not yet available
	Version / Size not existing in portfolio

HSA | Expansion Anchor



Legend:	
4	SIW 4AT-22 & SI-AT-22
6	SIW 6AT-22 & SI-AT-22

	M8	M10	M12	M16	M20	M24
HSA	4	4 & 6	4 & 6	4 & 6	6	
HSA-R	4	4 & 6	4 & 6	4 & 6	6	
HSA-R2	4	4 & 6	4 & 6	4 & 6		
HSA-BW	4	4 & 6	4 & 6	4 & 6		
HSA -LN		4	4	4		
HSA-R LN		4	4	4		

HST2 | Expansion Anchor



Legend:	
4	SIW 4AT-22 & SI-AT-22
6	SIW 6AT-22 & SI-AT-22

	M8	M10	M12	M16	M20	M24
HST2	4	4	4 & 6	6		
HST2-R	4	4	4 & 6	6		
HST2-BW	4	4	4 & 6			
HST2-R BW		4				

HST2 V3 | Expansion Anchor



Legend:	
4	SIW 4AT-22 & SI-AT-22
6	SIW 6AT-22 & SI-AT-22

	M8	M10	M12	M16	M20	M24
HST2 V3	4	4 & 6	4&6	6	6	
HST2 V3 HDG	4	4 & 6	4&6	6	6	
HST2-R V3	4	4 & 6	4&6	6	6	

HST3 | Expansion Anchor



Legend:	
4	SIW 4AT-22 & SI-AT-22
6	SIW 6AT-22 & SI-AT-22

	M8	M10	M12	M16	M20	M24
HST3	4	4 & 6	4 & 6	4 & 6	6	6
HST3 DN		4 & 6	4 & 6			
HST3-R	4	4 & 6	4 & 6	4 & 6	6	6
HST3-R DN		4 & 6	4 & 6			
HST3-BW	4	4 & 6	4 & 6	4 & 6		
HST3-R BW	4	4 & 6	4 & 6	4 & 6		

HST4 | Expansion Anchor



Legend:	
4	SIW 4AT-22 & SI-AT-22
6	SIW 6AT-22 & SI-AT-22

	M8	M10	M12	M16	M20	M24
HST4	4	4 & 6	4&6	6	6	
HST4-DN		4 & 6	4&6			
HST4 BW	4	4 & 6	4&6	6	6	
HST4-R	4	4 & 6	4&6	6	6	
HST4-R-DN		4 & 6	4&6			
HST4-R BW	4	4 & 6	4&6	6	6	

HSL4 | Expansion Anchor



Legend:	
4	SIW 4AT-22 & SI-AT-22
6	SIW 6AT-22 & SI-AT-22

	M8	M10	M12	M16	M20	M24
HSL4	4	4 & 6	4 & 6	4 & 6	6	6
HSL4-G	4	4 & 6	4 & 6	4 & 6	6	6
HSL-4 Pax		4				

HBC | T-Bolts



Legend:	
4	SIW 4AT-22 & SI-AT-22
6	SIW 6AT-22 & SI-AT-22

	M8	M10	M12	M16	M20	M24
HBC 40/22			4	4		
HBC-N 40/22						
HBC 50/30			4	4	4	
HBC-N 50/30						
HBC-B		4	4			
HBC-T			4 & 6	4 & 6	6	
HBC-C		4	4 & 6	4 & 6	4 & 6	
HBC-C-E			4 & 6	4 & 6		
HBC-C-N			4			

Metric Rods



Legend:	
4	SIW 4AT-22 & SI-AT-22
6	SIW 6AT-22 & SI-AT-22

Qualified Mortars:

→ HY-200 A/R V3, HY-170, RE-500 V3/V4, RE100, HVU-2, CT1, CT100

	M6	M8	M10	M12	M16	M20	M24	M27	M30	M33	M36	M39
HAS-U 5.8	4	4	4 & 6	6	6	6	6					
HAS-U 5.8 HDG	4	4	4 & 6	6	6	6	6					
HAS-U 8.8	4	4	4 & 6	6	6	6	6					
HAS-U 8.8 HDG	4	4	4 & 6	6	6	6	6					
HAS-U A4	4	4	4 & 6	6	6	6	6					
HAS 5.8 cut	4	4	4 & 6	6	6	6	6					
HAS 5.8 HDG cut	4	4	4 & 6	6	6	6	6					
HAS 8.8 cut	4	4	4 & 6	6	6	6	6					
HAS 8.8 HDG cut	4	4	4 & 6	6	6	6	6					
HAS A4 cut	4	4	4 & 6	6	6	6	6					
HAS 5.8 meter	4	4	4 & 6	6	6	6	6					
HAS 5.8 HDG meter												
HAS 8.8 meter	4	4	4 & 6	6	6	6	6					
HAS 8.8 HDG meter	4	4	4 & 6	6	6	6	6					
HAS A4 meter	4	4	4 & 6	6	6	6	6					

HIT-Z, HAS-D



Qualified Mortars:

→ HY-200 A/R V3

	M6	M8	M10	M12	M16	M20
HIT-Z		4	4	4 & 6	6	6
HIT-Z-R		4	4	4 & 6	6	6
HIT-Z-F					6	6
HIT-Z-D TP					6	
HIT-Z-R-D TP					6	
HAS-D			4 & 6		6	6

Legend:

4	SIW 4AT-22 & SI-AT-22
6	SIW 6AT-22 & SI-AT-22

MT-TL | Twist-Lock channel nut

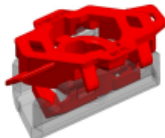


	M8	M10	M12	M16	M20	M24
MT-TL		4 & 6				
MT-TL OC		4 & 6				

Legend:

4	SIW 4AT-22 & SI-AT-22
6	SIW 6AT-22 & SI-AT-22

MT-FL | Fast-Lock channel nut



	M8	M10	M12	M16	M20	M24
MT-FL		4 & 6				
MT-FL OC		4 & 6				

Legend:

4	SIW 4AT-22 & SI-AT-22
6	SIW 6AT-22 & SI-AT-22

MT-TFB OC | Thread forming bolt



	M8	M10	M12	M16	M20	M24
MT-TFB OC		4 & 6				

Legend:

4	SIW 4AT-22 & SI-AT-22
6	SIW 6AT-22 & SI-AT-22

MT-THB OC | T-Head Bolt



Legend:	
4	SIW 4AT-22 & SI-AT-22
6	SIW 6AT-22 & SI-AT-22

	M8	M10	M12	M16	M20	M24
MT-THB OC			4 & 6			

MQN | Channel connector



Legend:	
4	SIW 4AT-22 & SI-AT-22
6	SIW 6AT-22 & SI-AT-22

	M8	M10	M12	M16	M20	M24
MQN-C		4				
MQN-C HDG plus		4				
MQN-CP		4				
MQN-B		4				
MQN-R		4				

MIQM | Wing nut



Legend:	
4	SIW 4AT-22 & SI-AT-22
6	SIW 6AT-22 & SI-AT-22

	M8	M10	M12	M16	M20	M24
MIQM		4	4			