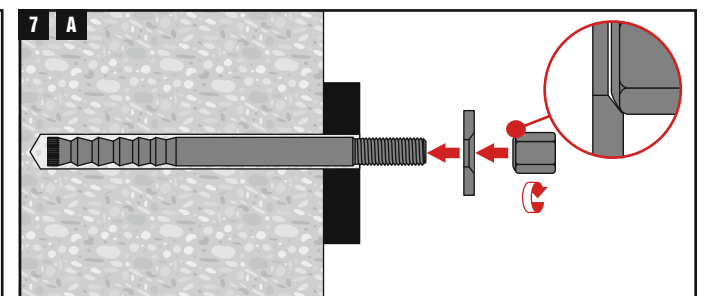
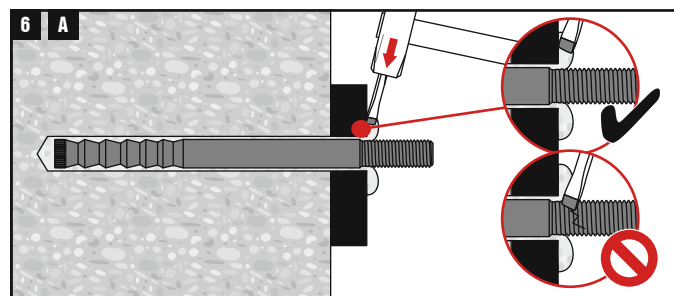
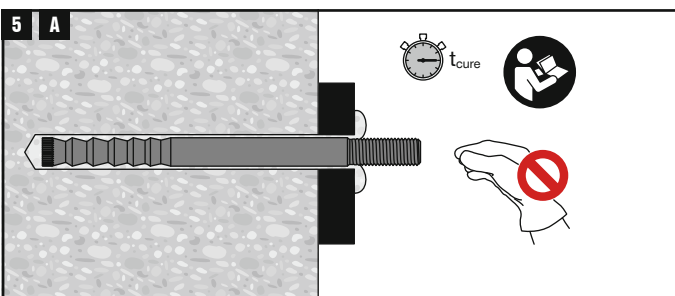
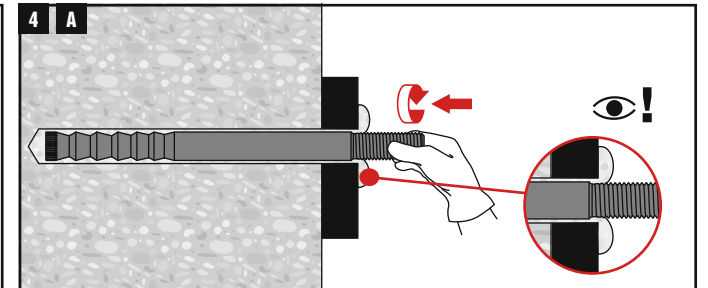
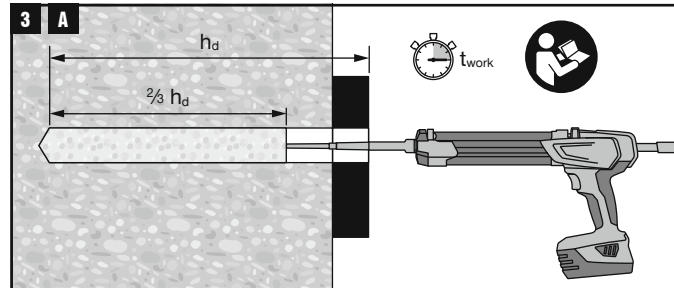
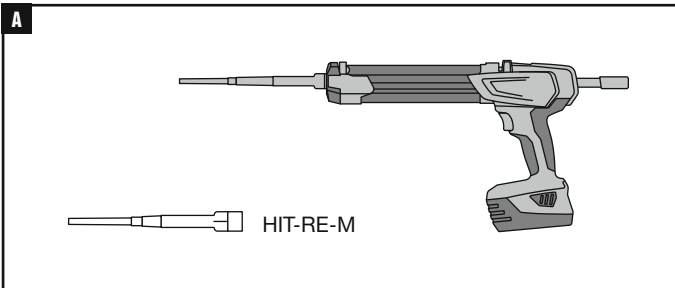
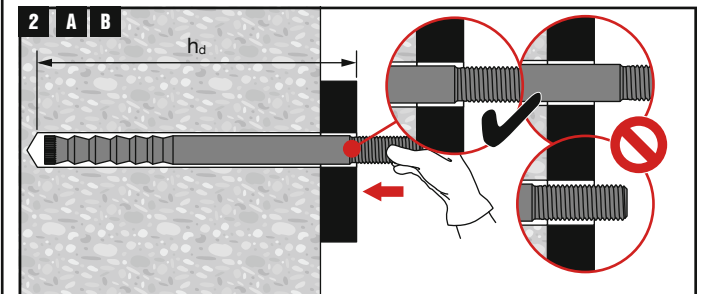
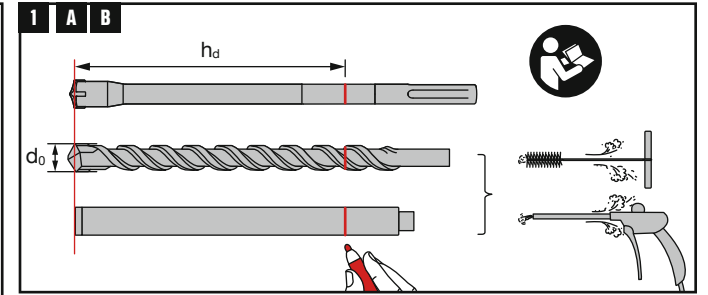
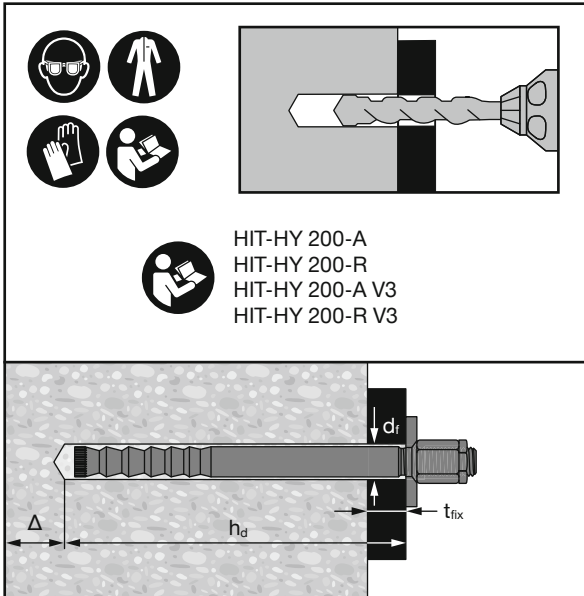
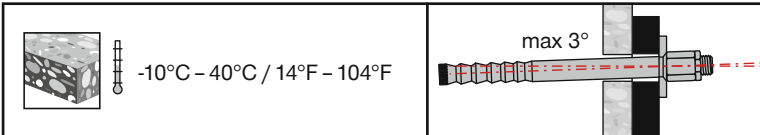
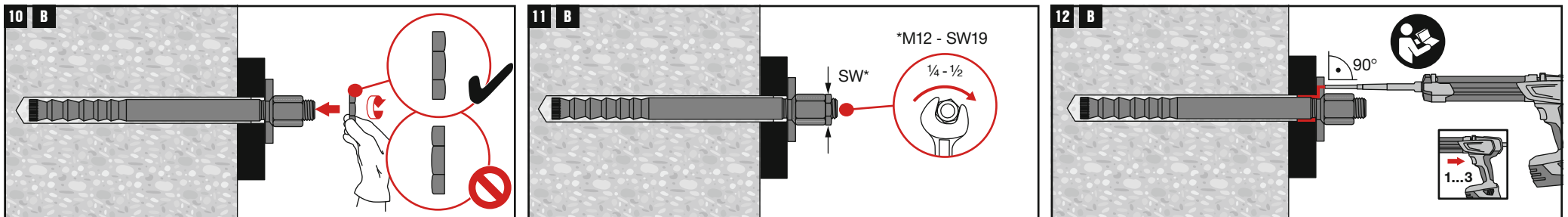
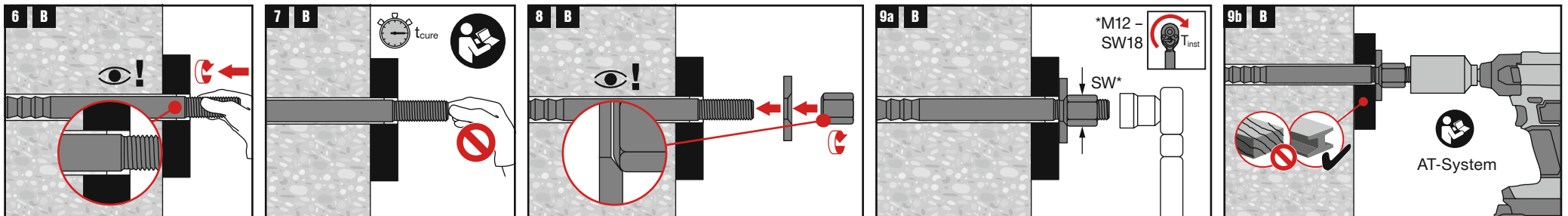
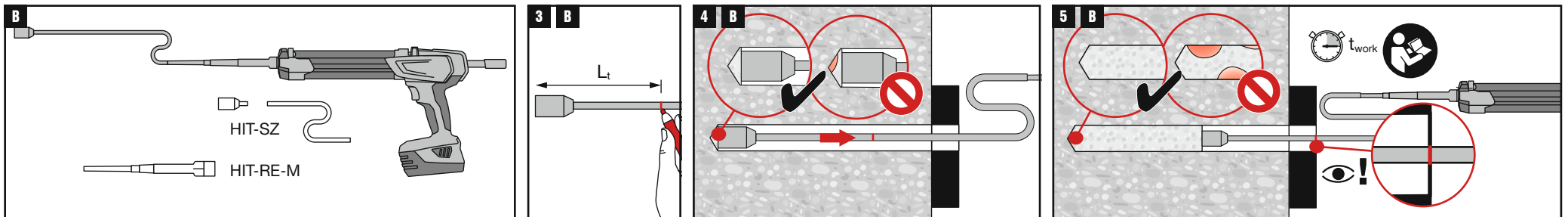
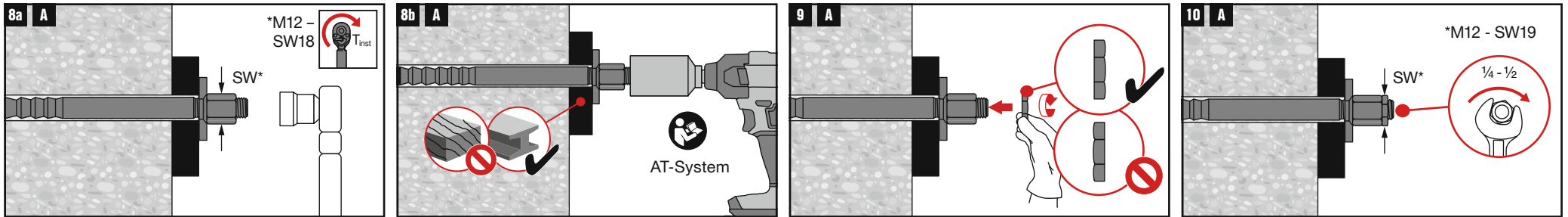


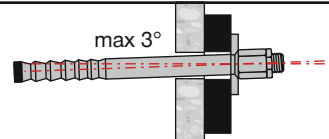
HAS-D	$d_r$ [mm]	$t_{fix}$ [mm]	$d_o$ [mm]	$h_d$ [mm]	$\Delta$ [mm]	$L_t$ [mm]	SW [mm]	AT System	$T_{inst}$ [Nm]
M12×160	16	12...25	14	132	$\geq 28$	90	18/19*	SIW 4AT-22 & SIW 6AT-22	30
M12×185	16	12...50	14	157	$\geq 28$	110	18/19*	+SI-AT-22	30
M16×200	20	16...30	18	165	$\geq 36$	122	24	SIW 6AT-22 +SI-AT-22	50
M16×220	20	16...50	18	185	$\geq 36$	138	24		50
M16×245	20	16...75	18	210	$\geq 36$	160	24		50
M16×275	20	16...105	18	240	$\geq 36$	183	24		50
M20×280	26	20...50	24	232	$\geq 48$	174	30		80
									80



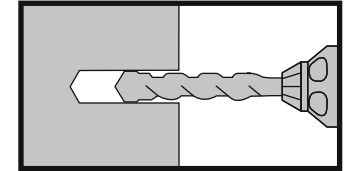




-10°C - 40°C / 14°F - 104°F



HIT-HY 200-A  
HIT-HY 200-R  
HIT-HY 200-A V3  
HIT-HY 200-R V3



HAS-D	d <sub>f</sub> [mm]	t <sub>fix</sub> [mm]	d <sub>o</sub> [mm]	h <sub>o</sub> [mm]	Δ [mm]	h <sub>ef</sub> [mm]	L <sub>p</sub>	SW [mm]	AT System	T <sub>inst</sub> [Nm]
M12×160	14	12 - 25	14	132 - t <sub>fix</sub>	≥ 28	125 - t <sub>fix</sub>	70 - t <sub>fix</sub>	18/19*	SIW 4AT-22 & SIW 6AT-22	30
M12×185	14	12 - 50	14	157 - t <sub>fix</sub>	≥ 28	150 - t <sub>fix</sub>	90 - t <sub>fix</sub>	18/19*	+SI-AT-22	30
M16×200	18	16 - 30	18	165 - t <sub>fix</sub>	≥ 36	155 - t <sub>fix</sub>	110 - t <sub>fix</sub>	24	SIW 6AT-22	50
M16×220	18	16 - 50	18	185 - t <sub>fix</sub>	≥ 36	175 - t <sub>fix</sub>	125 - t <sub>fix</sub>	24		50
M16×245	18	16 - 75	18	210 - t <sub>fix</sub>	>36	200 - t <sub>fix</sub>	150 - t <sub>fix</sub>	24	+SI-AT-22	50
M16×275	18	16 - 105	18	240 - t <sub>fix</sub>	>36	230 - t <sub>fix</sub>	180 - t <sub>fix</sub>	24		50
M20×280	24	20 - 50	24	232 - t <sub>fix</sub>	≥ 48	220 - t <sub>fix</sub>	165 - t <sub>fix</sub>	30		80

