

CE
21
Hilti AG FL-9494 Schaan
Hilti-DX-DoP-008
ETA-20/1042
EAD 333037-00-0602
0672
Threaded studs for connection
of materials to structural steel



BUREAU
VERITAS

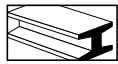
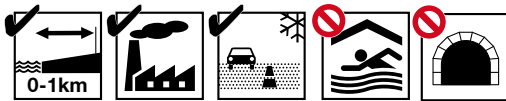
Lloyd's Register
TYPE APPROVED



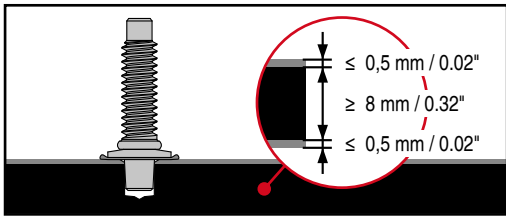
DNV.COM/AF



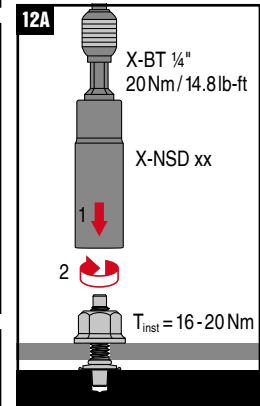
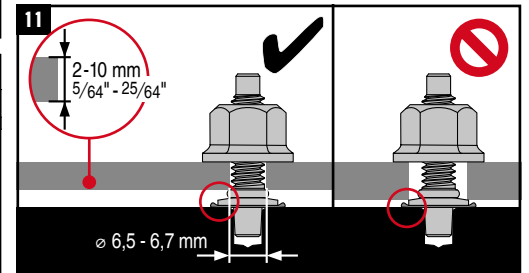
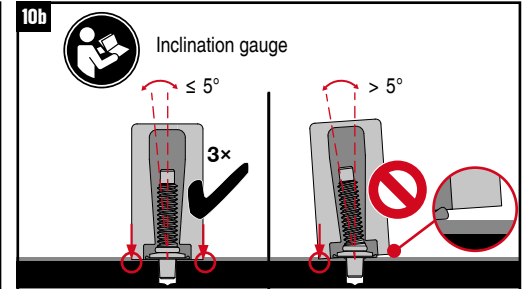
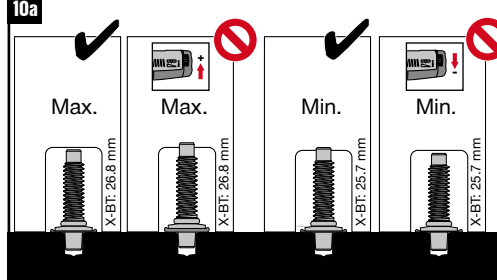
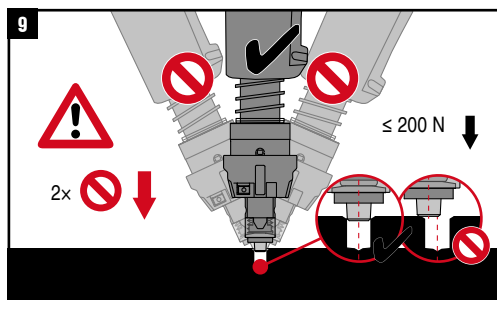
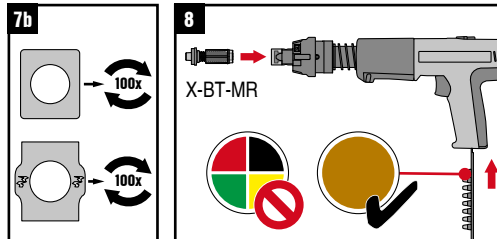
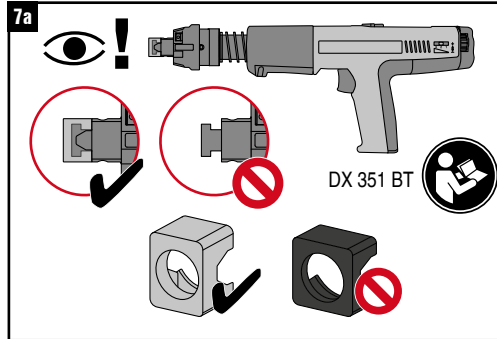
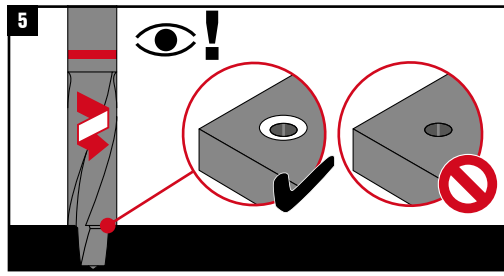
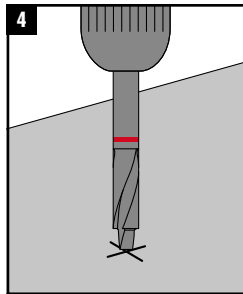
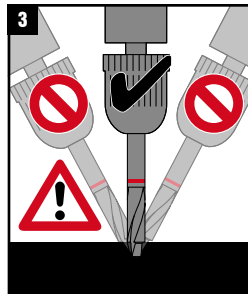
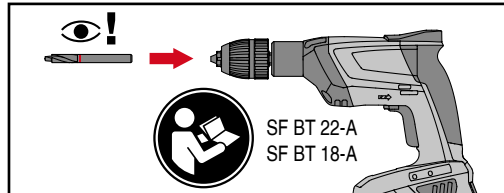
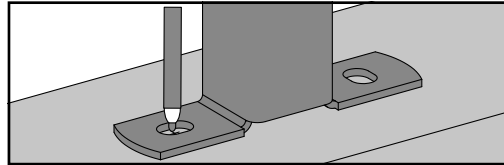
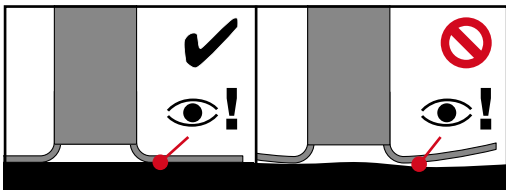
RINA



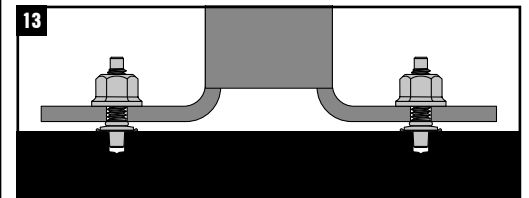
A4
316
Equivalent
Corrosion
Resistance



		Use with					
✓		SF BT 22-A	DX 351-BT	X-BT 1/4" - 20Nm / 14.8 ft lb	X-NSD 1/4" - 10 mm / 7/16"		



SF 6-A22	1	5
SF 6H-A22	1	5
SF 10W-A22	4	11
SF 8M-A22	4	11
SFC 14-A	2	11
SFC 22-A	2	11



CE
21
Hilti AG FL-9494 Schaan
Hilti-DX-DoP-008
ETA-20/1042
EAD 333037-00-0602
0672
Threaded studs for connection
of materials to structural steel



BUREAU
VERITAS



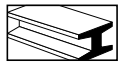
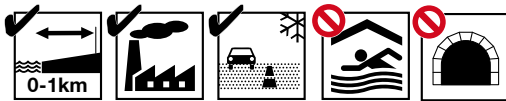
DNV.COM/AF



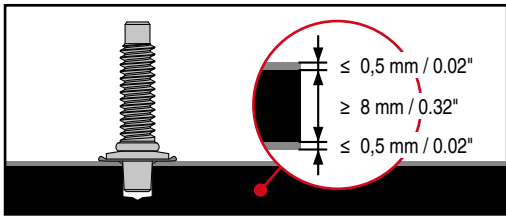
TYPE
APPROVED



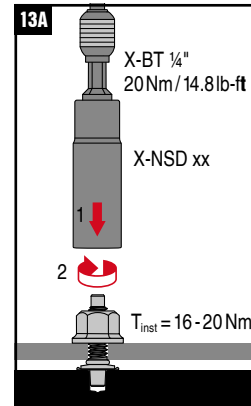
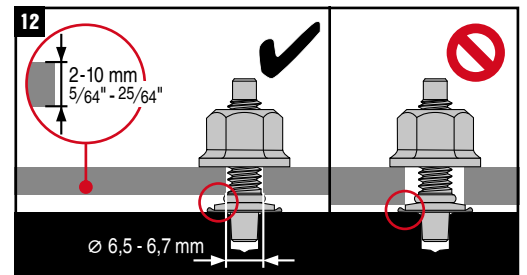
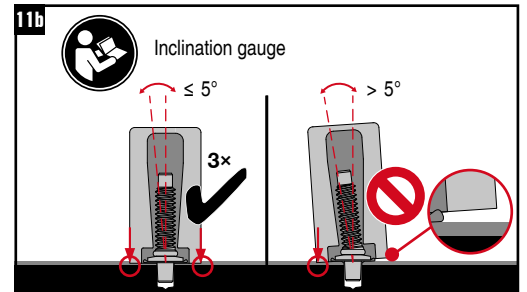
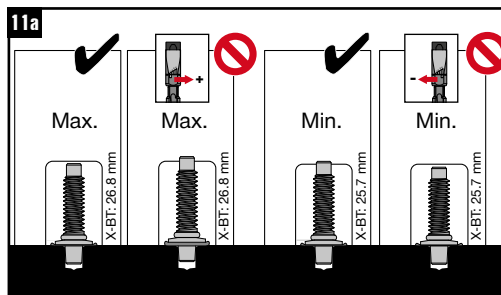
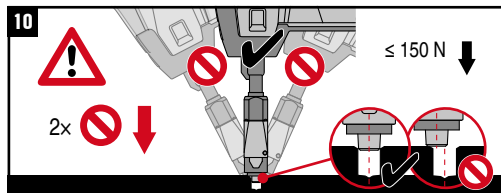
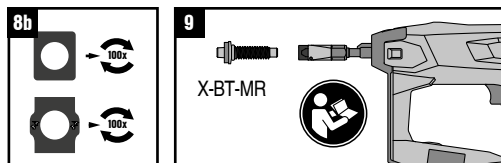
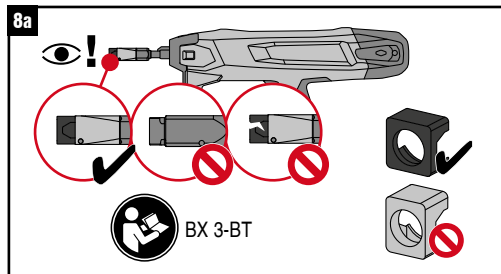
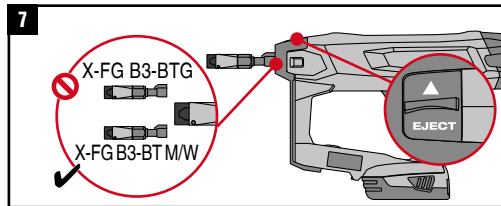
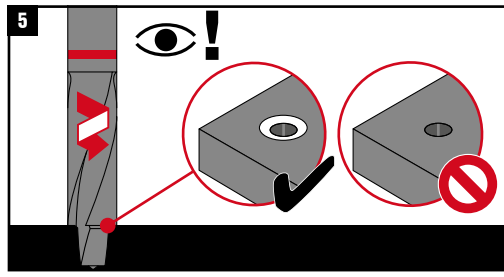
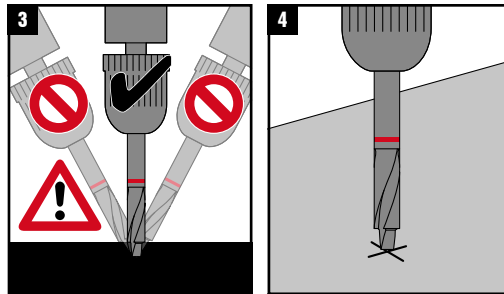
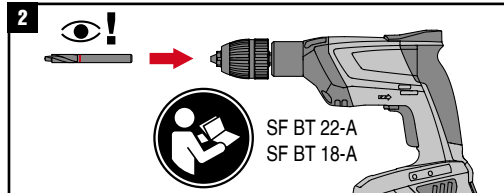
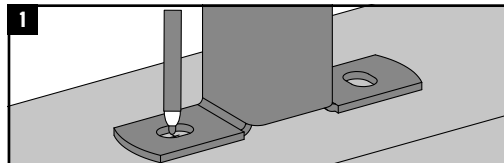
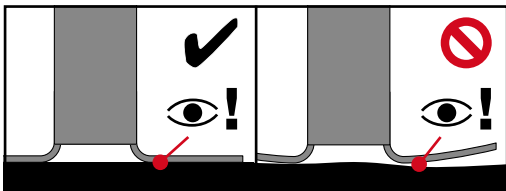
TYPE APPROVED PRODUCT



A4
316
Equivalent
Corrosion
Resistance



		Use with						
✓		✓						



		X-BT 1/4\"/>	
SF 6-A22	1	5	
SF 6H-A22	1	5	
SF 10W-A22	4	11	
SF 8M-A22	4	11	
SFC 14-A	2	11	
SFC 22-A	2	11	

